

# IBC VALVES

page 1 of 3

	PART NUMBER	1
1	CFB/20B/027	
2	CFB/20UD/027	
3	CFB/2010PB/027	
4	CFSB/20075N/027	
5	CFSB/2010B/027	
6	CFSB/2012B/027	



	PART NUMBER	2
1	CFB/20075C/027	
2	CFB/2010C/027	
3	CFB/2015C/027	



	PART NUMBER	3
1	CFC/21T/027	
2	CFC/212T/027	
3	CFC/215T/027	
4	CFC/20T/027	

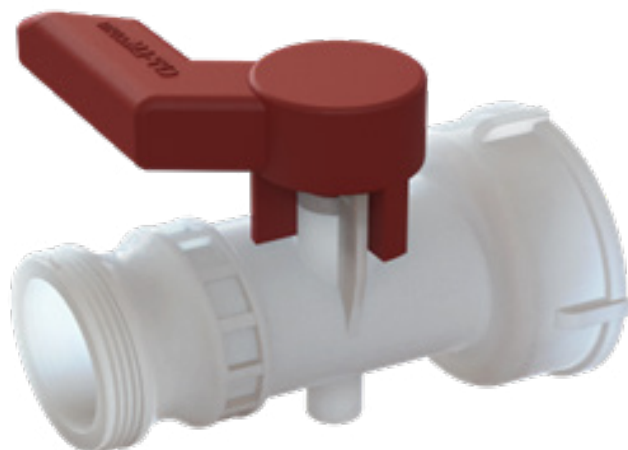


	PART NUMBER	4
1	CFB/20B/027	
2	CFD/2010B/027	
3	CFD/20UD/027	
4	CFD/2015B/027	
5	CFD/2075B/027	
6	CFSD/2005B/027	
7	CFSD/20075B/027	
8	CFSD/2010B/027	
9	CFSD/209010B/027	



	PART NUMBER	5
1	2BCSS/20B/024	
2	2BCSS/21B/024	
3	CFH/20C/027	

## IBC VALVES WITH 2" MALE CAMLOCK ADAPTER



FORTY  
COUNTRIES  
INTERNATIONAL  
DISTRIBUTION



I.S.O  
STANDARDS

•  
GLASS  
COUPLED  
POLYPROP

FOOD  
CONTACTS

•  
STAINLESS  
ARMS & PINS

MADE  
IN UK

•  
DELIVERY & VOLUME  
DISCOUNTS  
ON REQUEST



UK: +44-1322-551940



US: +1-863-638-6335



HTTP://WWW.CPP-LM.COM

CPP-LM LTD, UNIT 38 CRAYFORD IND EST, CRAYFORD, KENT, DA1 4HS, UNITED KINGDOM

Published October 2019

# IBC VALVES

page 2 of 3

## IBC VALVES WITH 2" MALE CAMLOCK ADAPTER

1

	PART NUMBER	FEMALE CAMLOCK TO MALE NPT/BSP/BUTTRESS
1	CFB/20B/027	2" Part 'B' 2" Camlock Coupler x 2" BSPT Male G/P/P
2	CFB/20UD/027	2" Part 'B', 2" Camlock coupler x S60X6 male buttress, G/P/P
3	CFB/2010PB/027	2" Part B 2" Camlock coupler x 1" BSP Short male, C/W o-ring
4	CFSB/20075B/027	2" Part 'SB', 2" Camlock swivel Coupler X ¾" BSP male G/P/P
5	CFSB/2010B/027	2" Part 'SB', 2" Camlock swivel coupler x 1" BSP male G/P/P
6	CFSB/2012B/027	2" Part 'SB', 2" Camlock swivel coupler x 1 ¼" BSP male G/P/P

2

	PART NUMBER	FEMALE CAMLOCK TO MALE CAMLOCK REDUCER
1	CFB/20075C/027	2" Part B 2" Camlock coupler x ¾" Camlock male
2	CFB/2010C/027	2" Part B 2" Camlock coupler x 1" Camlock male
3	CFB/2015C/027	2" Part B 2" Camlock coupler x 1½" Camlock male

3

	PART NUMBER	FEMALE CAMLOCK TO MALE HOSE BARB
1	CFC/21T/027	2" part 'C', 2" Camlock coupler x 1"(25mm) hose tail G/P/P
2	CFC/212T/027	2" Part 'C', 2" Camlock coupler x 1 ¼" (32mm) hose tail G/P/P
3	CFC/215T/027	2" Part 'C', 2" Camlock coupler x 1½" (38mm) hose tail G/P/P
4	CFC/20T/027	2" part 'C', 2" Camlock coupler x 2" (50mm) hose tail G/P/P

4

	PART NUMBER	FEMALE CAMLOCK TO FEMALE NPT/BSP/BUTTRESS
1	CFB/20B/027	2" Part 'B' 2" Camlock Coupler x 2" BSPT Male G/P/P
2	CFD/2010B/027	2" Part D 2" Female camlock adapter x 1" BSP female G/P/P
3	CFD/20UD/027	2" Part 'D', 2" Camlock coupler x S60x6 female G/P/P
4	CFD/2015B/027	2" Part D x 2" Camlock coupler x 11/2" BSP female G/P/P
5	CFD/2075B/027	2" Part 'D' x 2" Camlock coupler x 3/4" BSP female G/P/P
6	CFSD/2005B/027	2" Part 'SD', 2" Camlock swivel coupler x ½" BSP female G/P/P
7	CFSD/20075B/027	2" Part 'SD', 2" Camlock swivel Coupler X ¾" BSP female G/P/P
8	CFSD/2010B/027	2" Part 'SD', 2" Camlock swivel coupler x 1" BSP female G/P/P
9	CFSD/209010B/027	2" Part 'SD', 2" Camlock swivel coupler x 1" BSP female elbow G/P/P

5

	PART NUMBER	DUST CAPS
1	2BCSS/20B/024	2 BSP dust cap for IBC valve camlock outlet, P/P black
2	2BCSS/21B/024	2 1/8" (63mm) dust cap for IBC valve cam-cap, P/P black
3	CFH/20C/027	2" Part 'DC' 2" camlock coupler x dust cap G/P/P



UK: +44-1322-551940



US: +1-863-638-6335



HTTP://WWW.CPP-LM.COM

CPP-LM LTD, UNIT 38 CRAYFORD IND EST, CRAYFORD, KENT, DA1 4HS, UNITED KINGDOM

Published October 2019

# IBC VALVES

page 3 of 3

## IBC VALVES WITH 2" MALE CAMLOCK ADAPTER

	PART NUMBER	1
1	CFB/20B/027	
2	CFB/20UD/027	
3	CFB/2010PB/027	
4	CFSB/20075B/027	
5	CFSB/2010B/027	
6	CFSB/2012B/027	



	PART NUMBER	2
1	CFB/20075C/027	
2	CFB/2010C/027	
3	CFB/2015C/027	



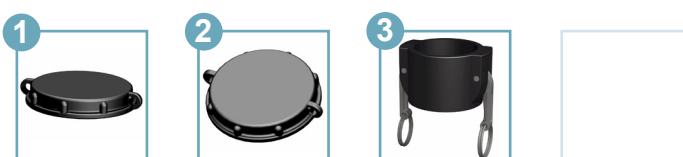
	PART NUMBER	3
1	CFC/21T/027	
2	CFC/212T/027	
3	CFC/215T/027	
4	CFC/20T/027	



	PART NUMBER	4
1	CFB/20B/027	
2	CFD/2010B/027	
3	CFD/20UD/027	
4	CFD/2015B/027	
5	CFD/2075B/027	
6	CFSD/2005B/027	
7	CFSD/20075B/027	
8	CFSD/2010B/027	
9	CFSD/209010B/027	



	PART NUMBER	5
1	2BCSS/20B/024	
2	2BCSS/21B/024	
3	CFH/20C/027	



UK: +44-1322-551940



US: +1-863-638-6335



HTTP://WWW.CPP-LM.COM

CPP-LM LTD, UNIT 38 CRAYFORD IND EST, CRAYFORD, KENT, DA1 4HS, UNITED KINGDOM

Published October 2019