

LSQ Polypropylene Line Strainers

3 CAM ARMS FOR POSITIVE SEAL

FEATURES

- Precision molded in glass reinforced polypropylene.
- Cam lever configuration for easy access for cleaning and servicing.
- 3/4" plug in cam lever cap for attaching ball valve for draining or back flushing.
- Poly ribbed stainless steel screen.
- EPDM lathe cut gasket.
- FKM (viton type) gaskets available.
- 75 P.S.I. maximum.



2" 80 Mesh

SCREENS	
MESH SIZE	RIB COLOR
6 MESH	WHITE
12 MESH	BLACK
20 MESH	BEIGE
30 MESH	YELLOW
50 MESH	RED
80 MESH	BLUE
120 MESH	BLACK

LINE STRAINERS

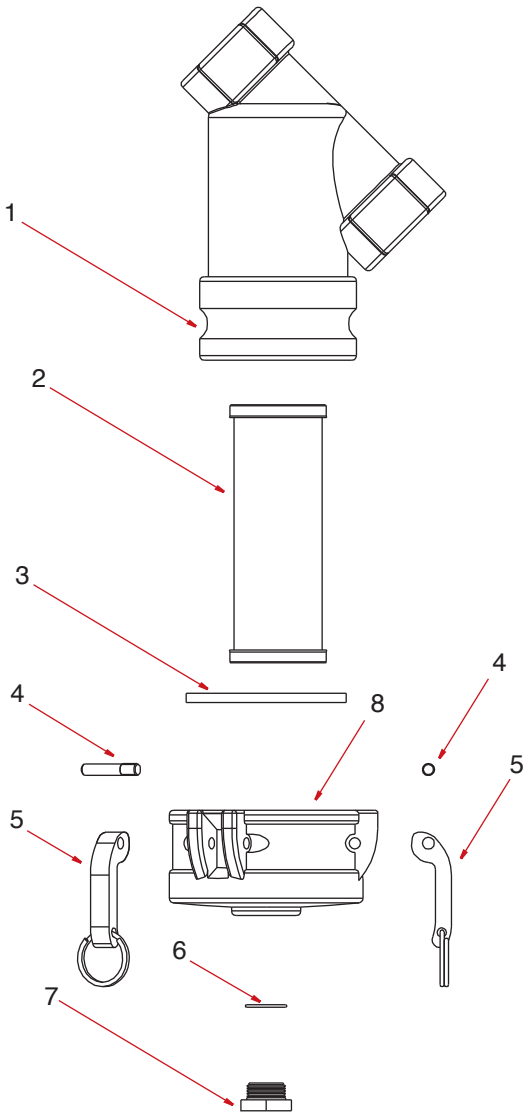
1 1/2" LSQ POLY STRAINERS			
PART NO	DESCRIPTION	QTY	
LSQ150-06	1 1/2" x 1 1/2" LSQ Strainer w/6 Mesh Screen	6/Box	
LSQ150-12	1 1/2" x 1 1/2" LSQ Strainer w/12 Mesh Screen	6/Box	
LSQ150-20	1 1/2" x 1 1/2" LSQ Strainer w/20 Mesh Screen	6/Box	
LSQ150-30	1 1/2" x 1 1/2" LSQ Strainer w/30 Mesh Screen	6/Box	
LSQ150-50	1 1/2" x 1 1/2" LSQ Strainer w/50 Mesh Screen	6/Box	
LSQ150-80	1 1/2" x 1 1/2" LSQ Strainer w/80 Mesh Screen	6/Box	
LSQ150-120	1 1/2" x 1 1/2" LSQ Strainer w/120 Mesh Screen	6/Box	

2" LSQ POLY STRAINERS			
PART NO	DESCRIPTION	QTY	
LSQ200-06	2" x 2" LSQ Strainer w/6 Mesh Screen	6/Box	
LSQ200-12	2" x 2" LSQ Strainer w/12 Mesh Screen	6/Box	
LSQ200-20	2" x 2" LSQ Strainer w/20 Mesh Screen	6/Box	
LSQ200-30	2" x 2" LSQ Strainer w/30 Mesh Screen	6/Box	
LSQ200-50	2" x 2" LSQ Strainer w/50 Mesh Screen	6/Box	
LSQ200-80	2" x 2" LSQ Strainer w/80 Mesh Screen	6/Box	
LSQ200-120	2" x 2" LSQ Strainer w/120 Mesh Screen	6/Box	



Standard Meshes & Data

Mesh	Microns	Wire Diameter	Opening	Open Area
6 Mesh	3360	0.089mm	0.335mm	62.7 %
8 Mesh	2380	0.071mm	0.246mm	60.2 %
10 Mesh	2000	0.064mm	0.191mm	56.3 %
12 Mesh	1680	0.058mm	0.152mm	51.8 %
16 Mesh	1190	0.046mm	0.112mm	50.7 %
20 Mesh	841	0.040mm	0.086mm	46.2 %
30 Mesh	595	0.031mm	0.053mm	40.8 %
40 Mesh	446	0.031mm	0.053mm	36.0 %
50 Mesh	297	0.023mm	0.028mm	30.3 %
80 Mesh	177	0.014mm	0.018mm	31.4 %
100 Mesh	149	0.011mm	0.013mm	30.3 %
120 Mesh	116	0.009mm	0.011mm	30.5 %



REPLACEMENT PARTS LSQ150 & LSQ200

ITEM	PART NO	DESCRIPTION	QTY	PRICE
1	LSQ150-B	1½" LSQ Body	1	
1	LSQ200-B	2" LSQ Body	1	
2	LS206	6 Mesh Screen	1	
2	LS212	12 Mesh Screen	1	
2	LS220	20 Mesh Screen	1	
2	LS230	30 Mesh Screen	1	
2	LS250	50 Mesh Screen	1	
2	LS280	80 Mesh Screen	1	
2	LS2120	120 Mesh Screen	1	
3	LSQ200-G	2" EPDM Gasket	1	
3	LSQ200-GV	2" FKM (viton type) Gasket	1	
4	300P	SS Cam Pin	1	
5	300K	3" SS Cam Arm w/Ring	1	
6	LSQ200R1	EPDM for Clean Out Plug	1	
6	13778V	FKM (viton type) O-Ring for Clean Out Plug	1	
7	PLUG075S	¾" Clean Out Plug	1	
8	LSQ200-C*	2" Cap	1	

NOTE: Items marked with asterisk* include parts 3, 4, 5, 6 and 7.