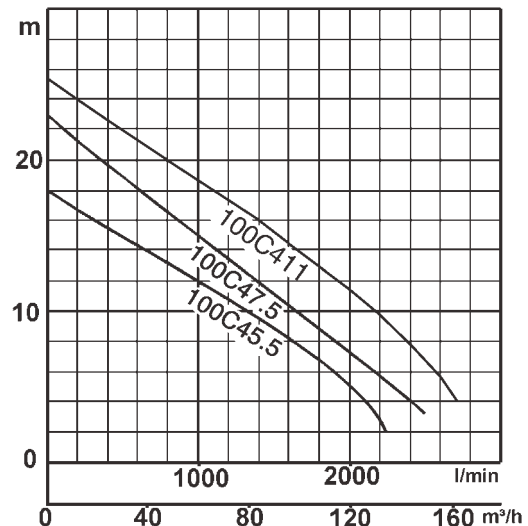
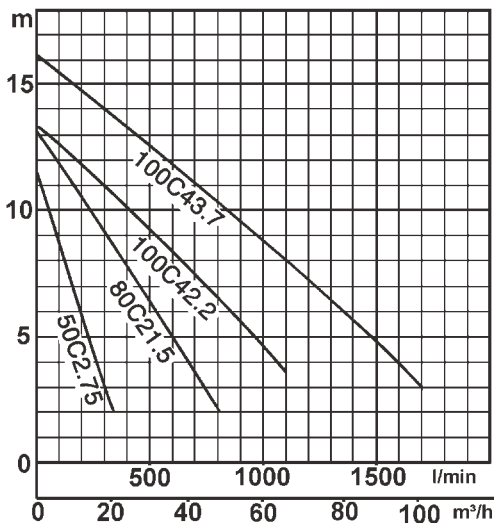
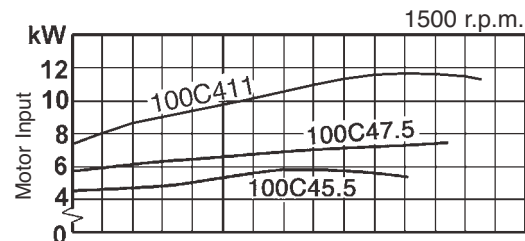
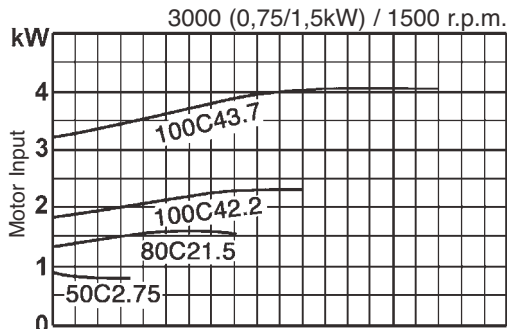


Sewage Pump with Cutter Mechanism - for professional use



Saw-shaped fixed blades are used in combination with carbide blades in an impeller-integrated structure. This construction ensures that fibrous foreign matter is cut up and sewage is transferred without clogging.



Non-clog Impeller with Cutter



A „cutter mechanism“ is provided by the combined action of a carbide blade integrated into a non-clog impeller and the saw-shaped inner surface of a suction cover.

This cutter mechanism cuts up fibrous foreign matter to facilitate transfer.

Standard Accessories:

- Cable
- Special screwed-in mating flange (1,5kW or less)
- JIS10K screwed-in mating flange (2,2kW or over)

Optional Accessories:

- Guide Rail Fitting consisting of:
 - Duck foot bend
 - Pump lifting chain
 - Guide connector
 - Guide support / Guide hook
- Discharge Bend
- Stand for free standing type (from 5,5kW on)

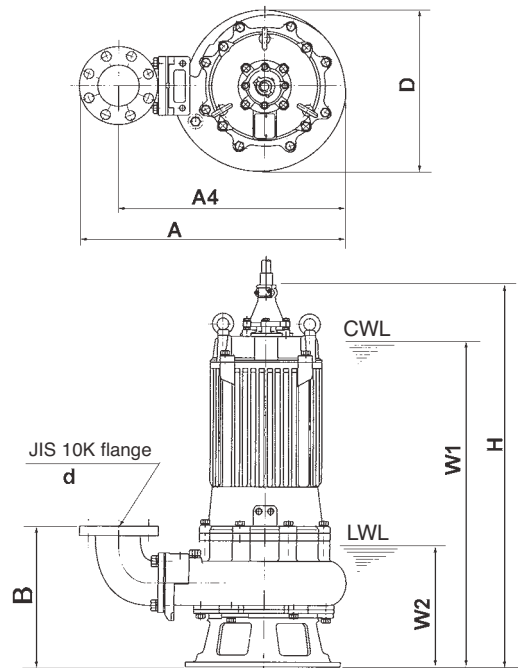
		Discharge bore mm			C
		50	80	100	
Pumping Fluid	Type of Fluid	Wastewater and liquids carrying waste and solid matters			
	Liquid Temperature	0 - 40°C			
Pump	Components	Impeller	Non-clogging type with cutter mechanism		
		Shaft Seal	Double mechanical seal		
		Bearing	Shielded ball bearings		
	Material	Impeller	Grey iron casting with sintered tungsten carbide alloy tip		
		Casing	Grey iron casting		
		Suction Cover	Ductile iron casting		
	Shaft Seal (mechanical Seal)	Silicon carbide in oil bath			
Motor	Type, Poles	Dry-type submersible induction motor, 2 and 4 poles, IP68			
	Insulation	Insulation class E, F			
	Phase / Voltage	Three-phase / 400V			
	Motor Protector (built-in)	Circle thermal protector			
	Lubricant	Turbine oil (ISO VG32)			
	Material	Frame	Grey iron casting		
		Shaft	Stainless Steel EN-X6Cr13/X30Cr13		
Cable		Rubber, H07RN-F			
Discharge Connection		Special flange (1,5kW) / JIS10K			

Specifications:

Bore mm	Model		P2 kW	P1 kW	rated current A	Phase	Total head max.m	Capacity max. l/min	Starting method	Dry Weight kg (excluding cable)		Impeller passage dia. mm	Cable m
	free standing	guide rail fitting								free standing	TOS-model		
50	50C2.75	TOS50C2.75	0,75	1,10	1,9	3	11,5	335	direct	24	23	21	10
80	80C21.5	TOS80C21.5	1,50	1,88	3,5	3	13,2	810	direct	36	34	37	10
100	100C42.2	TOS100C42.2	2,20	2,88	5,0	3	13,5	1100	direct	70	64	44	10
100	100C43.7	TOS100C43.7	3,70	4,70	8,0	3	16,0	1700	direct	86	80	60	10
100	100C45.5	TOS100C45.5	5,50	7,06	12,1	3	18,1	2290	direct	140	133	40	10
100	100C47.5	TOS100C47.5	7,50	9,88	15,9	3	23,0	2500	direct	159	152	40	10
100	100C411	TOS100C411	11,00	14,00	23,8	3	26,0	2750	s.-d.	184	177	50	10

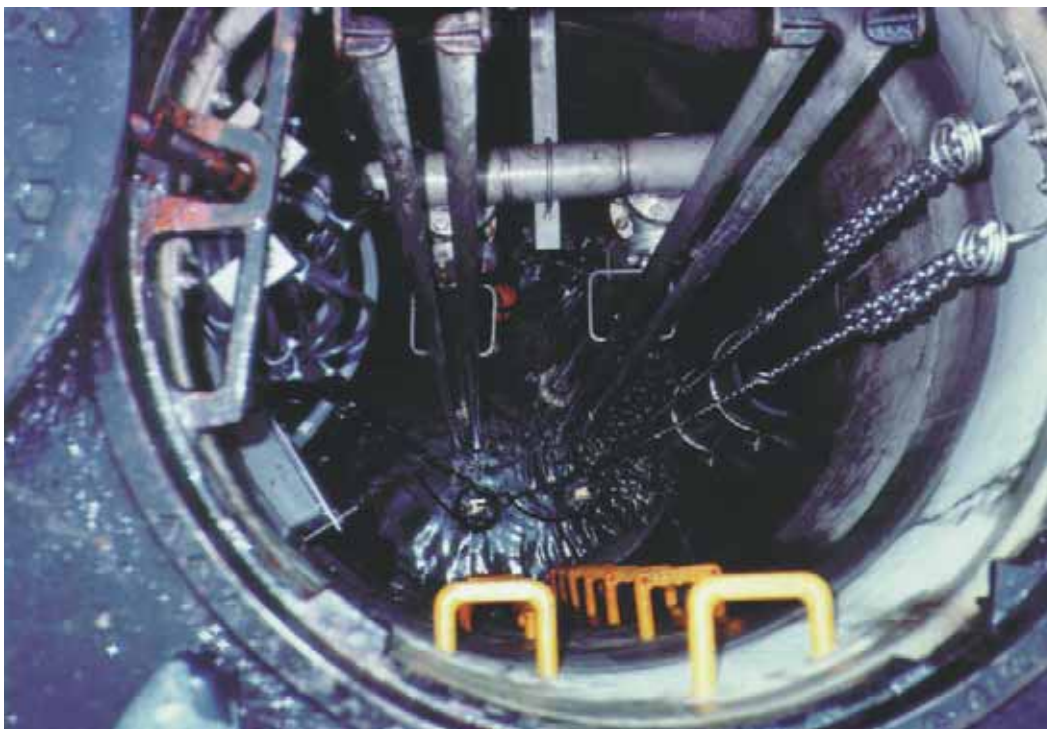
Dimension free standing type:

Unit mm



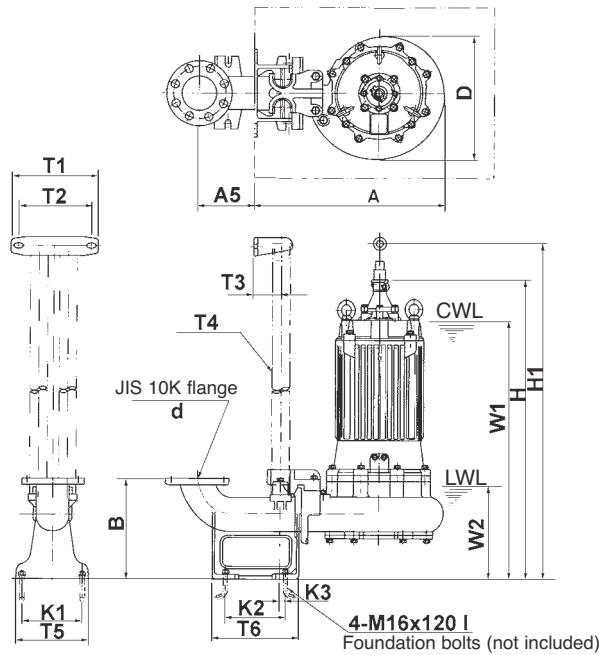
LWL: Lowest Running Water Level
CWL: Continuous Running Water Level

Model	discharge bore d	A	A4	D	B	H	Operating Water Level	
							W1	W2
50C2.75	50	405	351	250	196	415	385	145
80C21.5	80	446	392	250	234	536	465	190
100C42.2	100	594	489	324	328	616	570	225
100C43.7	100	602	497	331	333	680	635	235
100C45.5	100	687	582	400	372	824	700	335
100C47.5	100	687	582	400	372	814	720	335
100C411	100	710	605	431	372	1000	840	300



Dimensions TOS-model:

Unit mm



LWL: Lowest Running Water Level
CWL: Continuous Running Water Level

Model	discharge bore d	Pump Section					Water level		Guide Rail Fitting Section						Foundation			
		A	A5	D	H	H1	W1	W2	T1	T2	T3	T4	T5	T6	B	K1	K2	K3
TOS50C2.75	50	368	175	250	459	650	430	190	230	185	50	25A	160	200	250	120	120	10
TOS80C21.5	80	410	165	250	586	--	515	240	230	195	60	32A	220	250	290	170	170	15
TOS100C42.2	100	484	165	324	631	790	585	240	230	195	60	32A	220	250	290	170	170	15
TOS100C43.7	100	490	165	339	690	860	645	245	230	195	60	32A	220	250	290	170	170	15
TOS100C45.5	100	619	181	384	822	1160	690	305	300	245	95	50A	250	290	340	200	200	19
TOS100C47.5	100	619	181	384	812	1155	710	305	300	245	95	50A	250	290	340	200	200	19
TOS100C411	100	642	181	431	934	1265	805	300	300	245	95	50A	250	290	340	200	200	19

We reserve the right to change specifications and designs herein for improvement without prior notice. Our pumps are for professional use only. In the event that Tsurumi (Europe) GmbH have, in exceptional cases taken over, a manufacturer's warranty, this entitles the end-user to assert remedy free of charge against Tsurumi (Europe) GmbH due to any defect to the product occurring during the guarantee period (see below), also then when the warranty claims against the seller do not or no longer exist. In the event of malfunction, which is attributable to the improper handling by the enduser, no guarantee claim shall arise. Further claims shall not result from the warranty, unless if something to the contrary has explicitly been determined. The decision as to whether remedy is effected by way of replacement or repair shall be at the choice of Tsurumi (Europe) GmbH. The claims shall be time barred after a period of three months after expiry of the guarantee period, however, not before expiry of the warranty period which is valid towards the seller. In the event of doubt, the warranty period shall correspond with the warranty period which is valid between the end-user and his seller.

Tsurumi (Europe) GmbH

Heltorfer Straße 14
D-40472 Düsseldorf
Tel.: +49-211-4179373
Fax: +49-211-4791429
Email: sales@tsurumi-europe.com
www.tsurumi-europe.com

Your Dealer