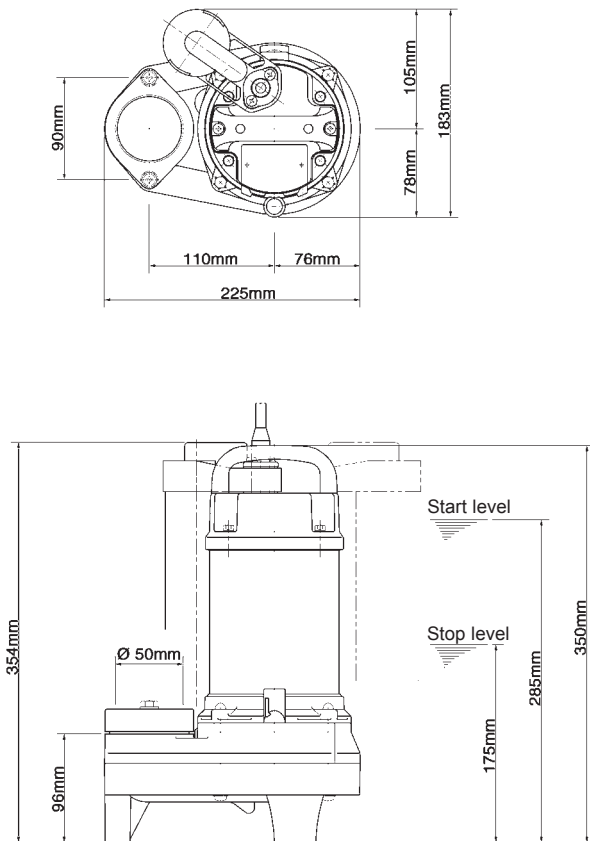
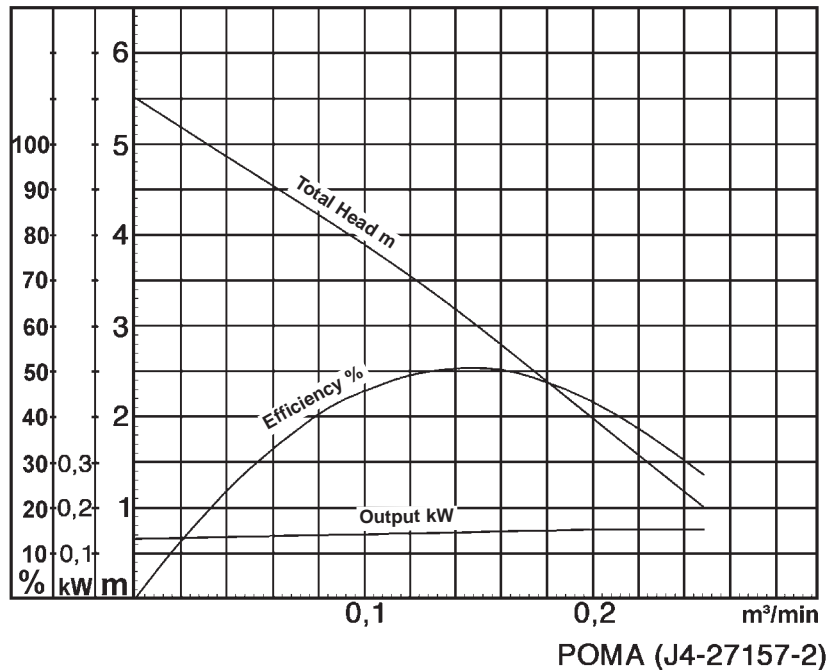


Data Sheet POMA



POMA (J4-27196-1)



POMA (J4-27157-2)

Classification

Electric submersible pump
 Protection class IP68
 Depth of submersion max. 20m
 Vortex impeller
 Impeller passage 35mm
 Suitable for sewage water, various waste water

Electric Motor

Dry-type submersible induction motor,
 Insulation class E, 2 poles, 2850 r.p.m.
 Capacitor start
 Voltage: 110/230V, 50Hz, 1-phase
 Power input: 0,305kW
 Power output: 0,150kW
 Nominal current: 3,1A/1,6A
 Start current: 8,1A/4,3A

Electric Cable

10m H07RN-F 3Cx1mm²

Motor Protection

Circle thermal protector
 (snap-action bi-metal device)

Shaft Seal

Double mechanical seal in oil bath
 additional lubrication by oil lifting device
 Primary Seal:
 silicon carbide on silicon carbide
 Secondary Seal:
 ceramic on carbon

Bearings

Shielded ball bearings, maintenance-free

Materials

Impeller:	Fibre reinforced plastic
Casing upper:	Fibre reinforced plastic
Casing lower:	Plastic
Motor frame:	SUS304 (EN-X5CrNi18-10)
Shaft:	SUS403 (EN-X6Cr13)

Discharge Connection

2" (50mm) screwed-in mating flange

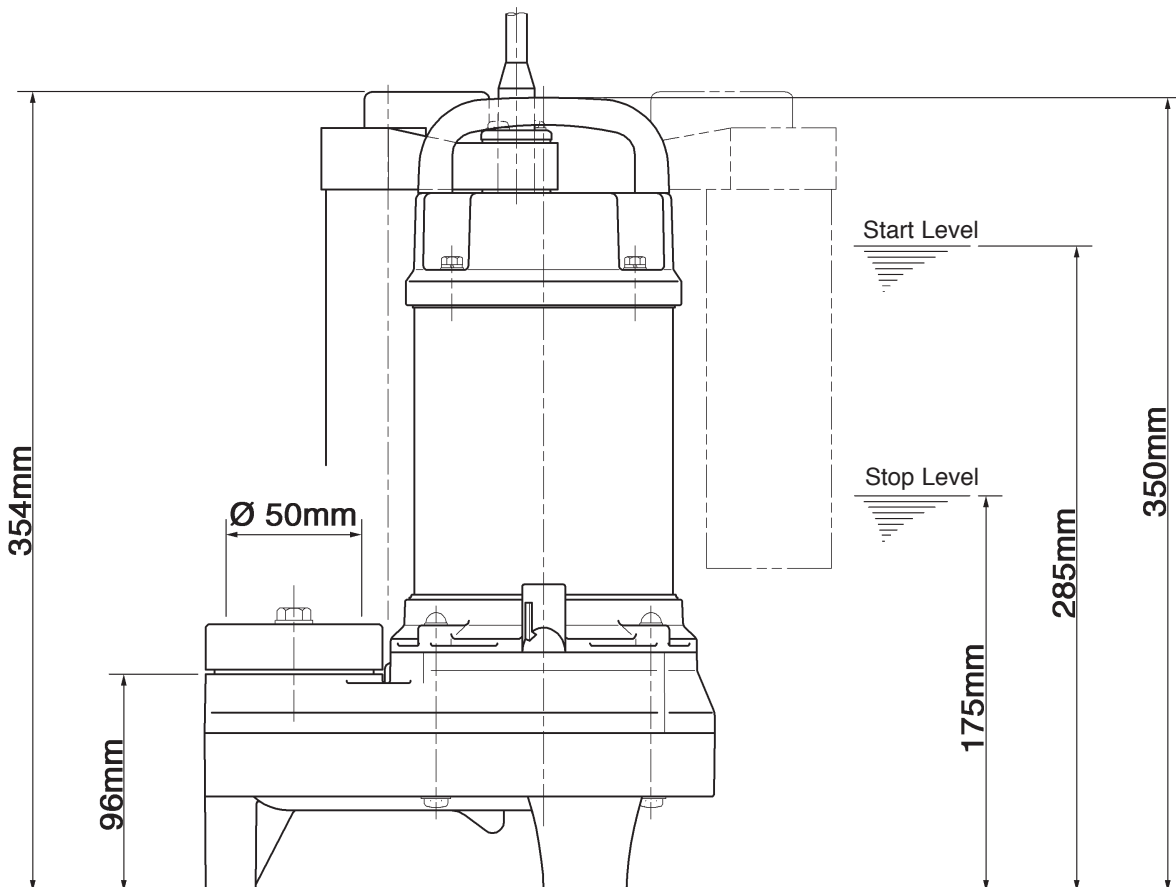
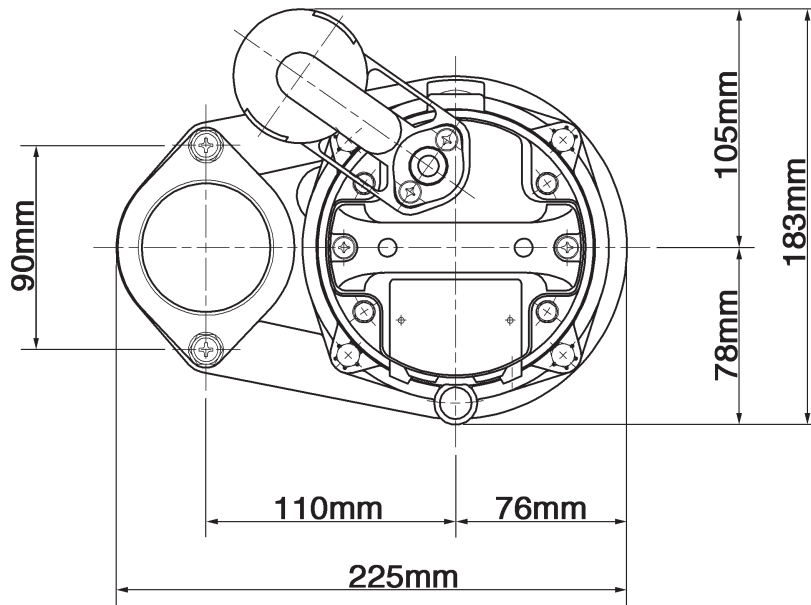
Weight

6,6 kg (dry weight of the pump)

Special Feature

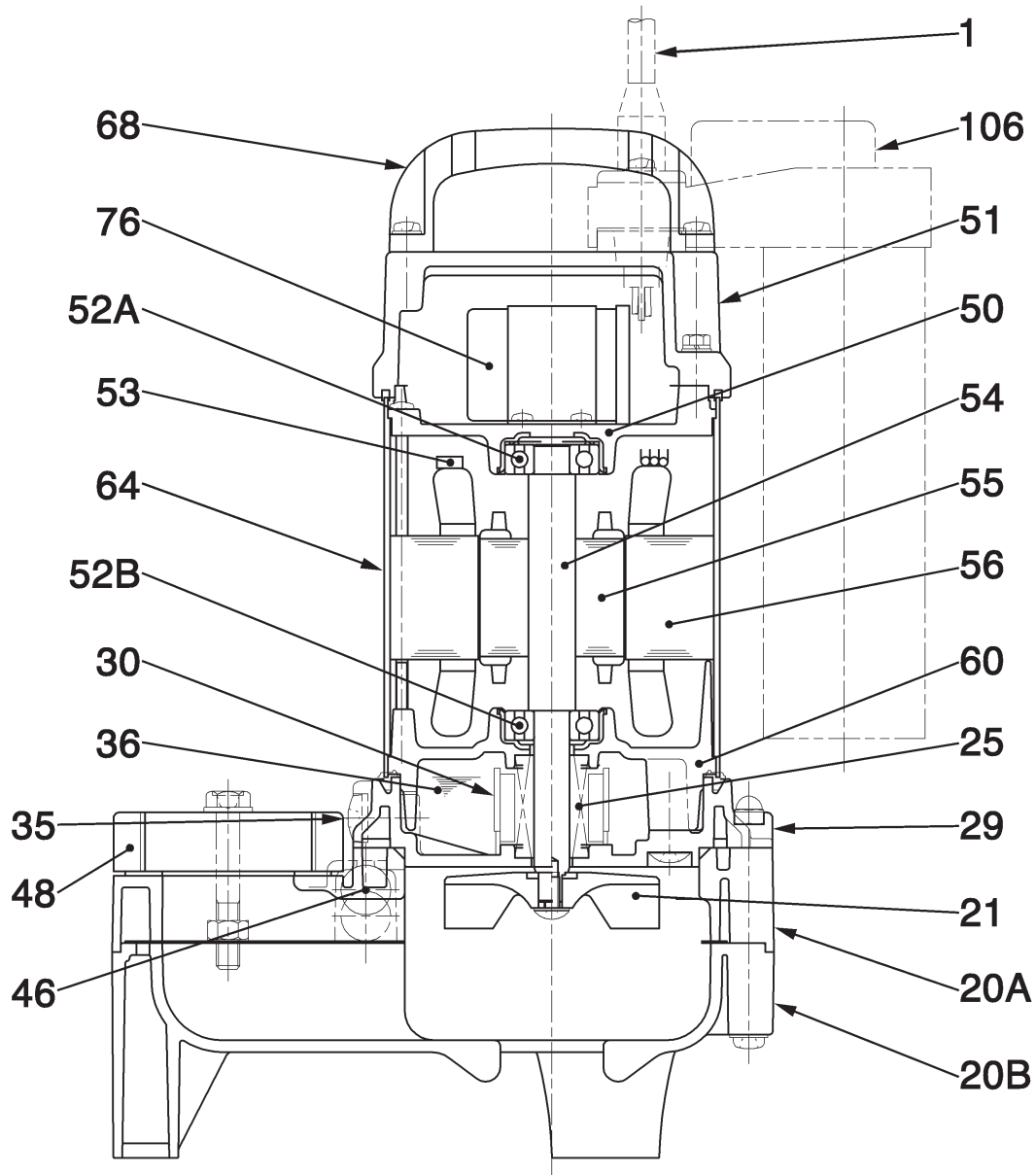
Level control by float switch

Dimensional Drawing POMA



POMA (J4-27196-1)

Sectional Drawing POMA



POMA (J4-27199-1)

No.	Description	Qty.	Remarks	No.	Description	Qty.	Remarks
1	Cabtyre Cable	1	H07RN-F	52B	Lower Bearing	1	6201ZZC3
20A	Casing Upper Half	1	Plastic W/GF	53	Motor Protector	1	
20B	Casing Lower Half	1	Plastic	54	Shaft	1	SUS403 (EN-X6Cr13)
21	Impeller	1	Plastic W/GF	55	Rotor	1	
25	Mechanical Seal	1	D-12B	56	Stator Complete	1	
29	Oil Casing	1	Plastic W/GF	60	Bearing Housing	1	Aluminium Die Casting
30	Oil Lifter	1	Plastic	64	Motor Frame	1	SUS304 (EN-X5CrNi18-10)
35	Oil Plug	1	SUS304 (EN-X5CrNi18-10)	68	Handle	1	Plastic
36	Lubricant		Turbine Oil (ISO VG32)	76	Capacitor	1	
46	Air Release Valve	1	Glass Ball	106	Float Set	1	Plastic
48	Screwed Flange	1	Plastic				
50	Motor Bracket	1	Aluminium Die Casting				
51	Head Cover	1	Plastic W/GF				
52A	Upper Bearing	1	6201ZZC3				

Pump Performance Curve POMA

Discharge Bore	50 mm
Total Head	max. 5,5 m
Capacity	max. 0,25 m ³ /min
Motor Output	0,15 kW
Motor Input	0,305 kW
Phase	1
Voltage	110/230 V
Frequency	50 Hz
Rated Current	3,1/1,6 A
Starting Current	8,1/4,3 A
Poles	2
Revolution	S.S. 2850 r.p.m.
Starting Method	capacitor
Insulation Class	E

